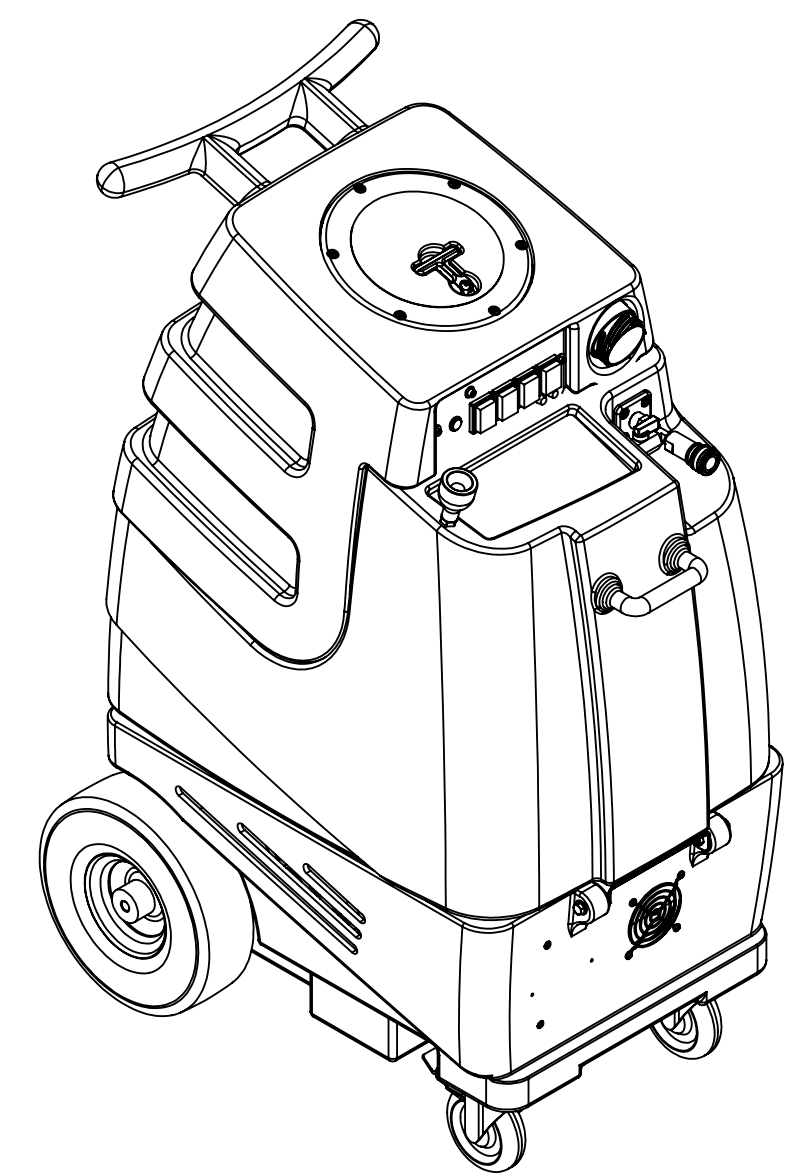


ITEM NO.	PART NO.	DESCRIPTION	QTY.
1	H304	screw, #8 x 5/8 phil oval, s/s	14
2	H296	guard, cooling fan, wire	2
3	H186	screw, 10-32 x 3/4, phil, flat, countersunk, s/s, black	2
4	H632	plate, mounting, relay switch, dual circuit indicator	1
5	H792	nut, lock, 6-32, nylon insert	3
6	E632	relay, shut-off switch, mechanical float, 115v	2
7	H216	nut, lock, 1/4-20, nylon insert, s/s	10
8	H210	washer, 1/4" flat, s/s	22
9	H342	bolt, 1/4-20 x 1" hex head, s/s	8
10	H668	caster, 4", black hub & gray tread	2
11	P731	base	1
12	H371	axle, 18.03" x .50" dia	1
13	H254	washer, axle, cut 1/2" id	10
14	H109	wheel, 10", foam filled	2
15	H042	c-clip, 12mm, external	2
16	H876	washer, 1/2 flat, s/s	4
17	H273	nut, kep, #10-32 zinc	14
18	H256	screw, 10-32 x 3/4" phil pan head	6
19	E360	flanged male inlet recaptacle, 230V, 20A	2
20	B109	barb, 1/4" barb x 1/4" mpt	2
21	B118	valve, brass, relief, 500 psi	1
22	B113	tee, 1/4" fpt x 1/4" fpt x 1/4" fpt	2
23	A902A	heater, 2000wt, 230v	1
24	H230	screw, 10-32 x 1/2" phil pan head, s/s	6
25	H528	bracket, heater mounting, dual	1
26	B142	coupling, 1/4" fpt x 1/4" fpt	3
27	B108	valve, brass, 1/4" check	1
28	AH184	sol hose, 1/4" X 14.5" oal, 1/4" msw x 1/4" fpt	1
29	B170	ferrule, 1/4" brass	3
30	PH634-26	sol hose, 1/4", silicone braided, clear	3
31	B110	adapter, brass, 1/4" sw barb x 1/4" fpt, w/gasket	1
32	B103	elbow, 90 deg street, 1/4"mpt x 1/4" fpt	3
33	B652	elbow, 90 deg, 3/8"mpt x 1/4"mpt	1
34	H222	screw, 10-32 x 1-1/4" phil pan head, s/s	4
35	C323D	pump, 220psi, diaphragm, 230V	1
36	B186	elbow, 90 deg street, 3/8"mpt x 3/8" fmpt	1
37	H299	washer, 11/16" id x 1-1/2" od x .075, s/s	4
38	B160	adapter, brass, 1/2" barb x 3/8" fsw, ball end	1
39	H347	clamp, hose, 5/16-29/32	2
40	B172	elbow, brass, 90 deg, 1/2" barb x 3/8"mpt	1
41	H912	bracket, rear, fb/spy	1
42	H770	bolt, 1/4-20 x 1/2" serrated hex flange, zinc	8
43	H307	washer, star, 1/4" steel zinc	2
44	G052	washer, buna 1-1/8" od x 3/16" id	6
45	H211	washer, 1/4" id x 1" od, flat, s/s	6
46	H203	bolt, 1/4-20 x 1-1/4"	2
47	H217	clamp, hose, 2-1/4 dia	4
48	H124V	CUFF-LYNX, 2" female cuff X 2" male thread starter cuff	2
49	H194	coupler, 2" dia x 3" length, s/s	2
50	PH628-15	vac hose, 2", wire reinforced	2
51	H213	washer, 1/4" lock, s/s	10
52	H215	nut, hex, 1/4-20 s/s	2
53	PH612-60	tubing, clear, 1/2" OD x 3/8" ID, faucet fill	1
54	G018	cover, sol tank (sp)	1
55	H178	faucet fill	1
56	B241	adapter, brass, 3/8" barb x 1/4"mpt	1
57	P732	sol tank, speedster	1
58	H768	bolt, 1/4-20 x 3/4" serrated hex flange, zinc	2
59	AH206	sol hose, 1/4" x 28", 1/4 msw x 1/4 mpt	1
60	H484	plate, mounting, QD	1
61	B135	tee, 1/4" mpt x 1/4" mpt x 1/4" mpt	1
62	B102	quick disconnect, 1/4" fqd x 1/4" fpt	1

ITEM NO.	PART NO.	DESCRIPTION	QTY.
63	B656	valve, ball, 1/4" fpt x 1/4" fpt, s/s	1
64	H485	handle, aluminum grip, black	1
65	H201	bolt, 1/4-20 x 1/2", hex head, zinc	2
66	H378	bracket, front hinge, sp/fb	1
67	H316	bolt, 1/4x1-1/2", hex head zinc	2
68	B107	nipple, hex, 1/4"mpt x 1/4"mpt	2
69	H212	flat washer, 9/16"ID x 1 1/16"OD, AN960-C916	4
70	B119A	filter, strainer, 1/2" fpt	1
71	B210	bushing, brass, 1/2"mpt x 3/8" fpt, hex	1
72	B216	nipple, brass, 3/8" x close	1
73	H226	spout, drain, 45 degree	1
74	H225	valve, drain, 1-1/2"	1
75	P733	vac tank, speedster	1
76	A926	elbow, inlet assembly 2"	1
77	PH633-2.5	pipe, pvc, 1-1/2"	4
78	P503	adapter, 1.5" pvc, 45 deg, fslip	4
79	P502	adapter, 1.5" pvc, fslip x fslip	2
80	G097	filter, screen mesh, 1.90" dia	2
81	G003	filter, foam, 2", vac stack, 1/2"	2
82	PH633-.1	pipe, pvc, 1-1/2"	2
83	G091	gasket, 7", vac lid	1
84	G090	lid, vac tank, clear, 7"	1
85	PH633-6.5	pipe, pvc, 1-1/2"	2
86	P520	adapter, 1.5" mpt pvc	2
87	H314	nut, lock, 1-1/2", steel	2
88	H135V	Cuff-Lynx, 2" male cuff x 2" mpt, vinyl	1
89	H348	plate, switch, 1000DX-200	1
90	H612	waasher, #8, flat regular	3
91	H389	screw, 10-32 x 1/2" SHCS, alloy	1
92	E516	switch, rocker, 3 position	1
93	E511	light, red, 250v	2
94	E515	switch, rocker, 2 position	3
95	E512B	light, indicator, blue	1
96	H246	screw, 8-32 x 3/8" SHCS, alloy, Black	2
97	E373	level switch, vacuum shut-off, rear threads	2
98	H390A	bracket, "L", 2" x 2"	2
99	H343	screw, 10 x 5/8" hex head, zinc	2
100	H096	bolt, hex, 1/4-20 x 4", zinc Finish	6
101	H503	vac support, 3 stage, 3.25", no thrds	6
102	C304LA	vac motor, 3 stage, low amp, 240V, 110"	2
103	G004	gasket, vacuum motor	2
104	G004-A	gasket, vacuum motor	2

ITEMS NOT SHOWN

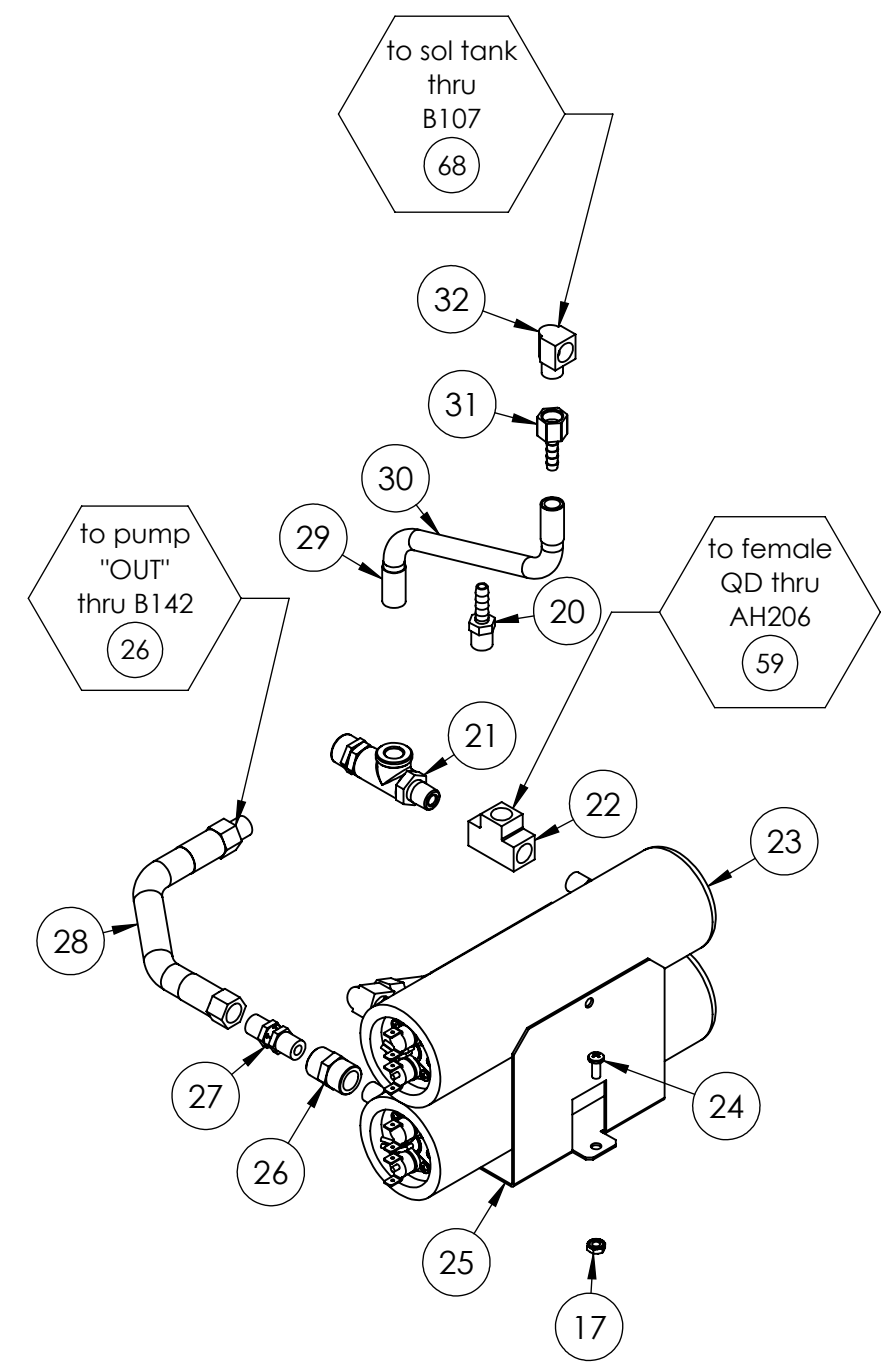
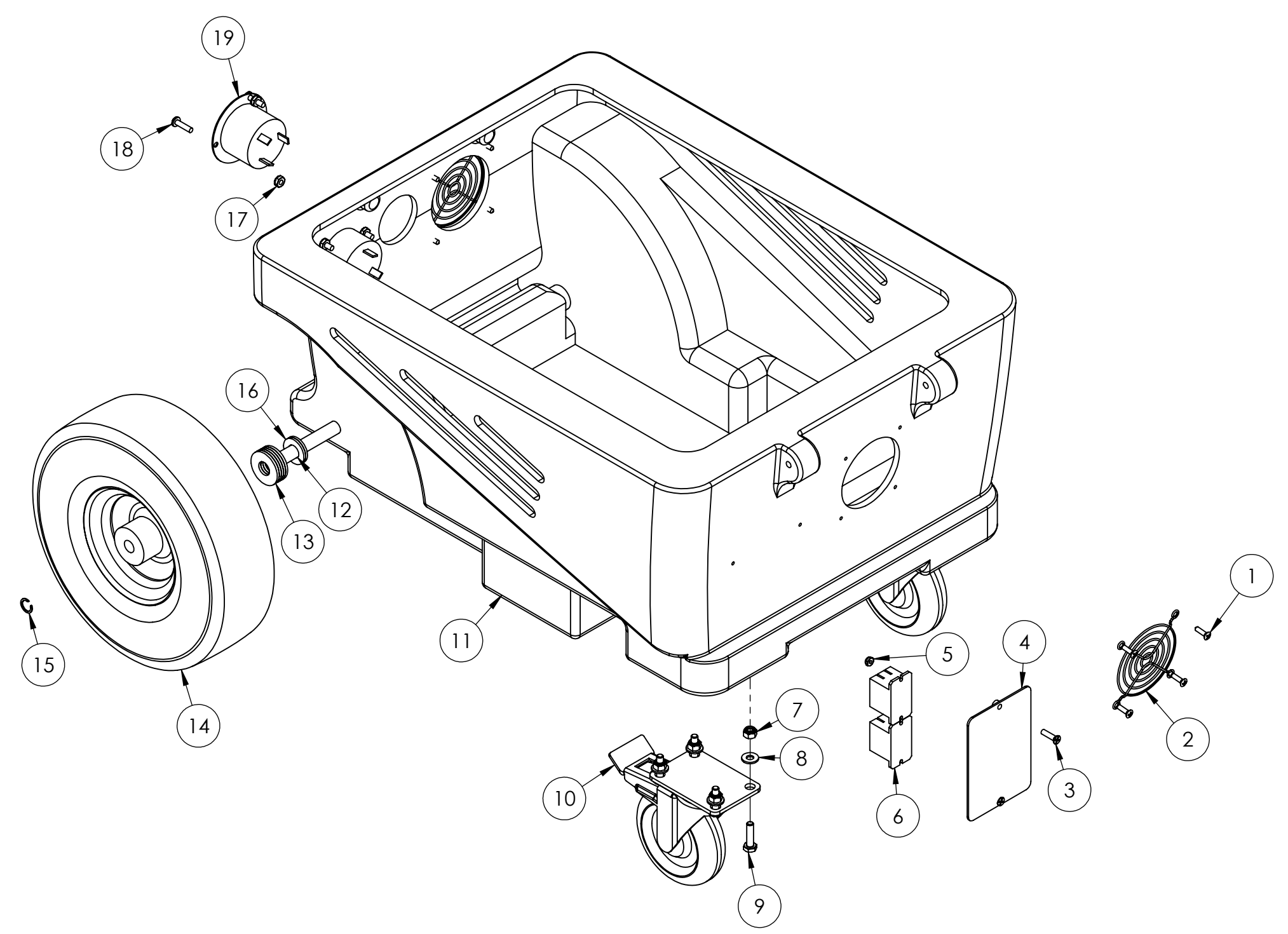
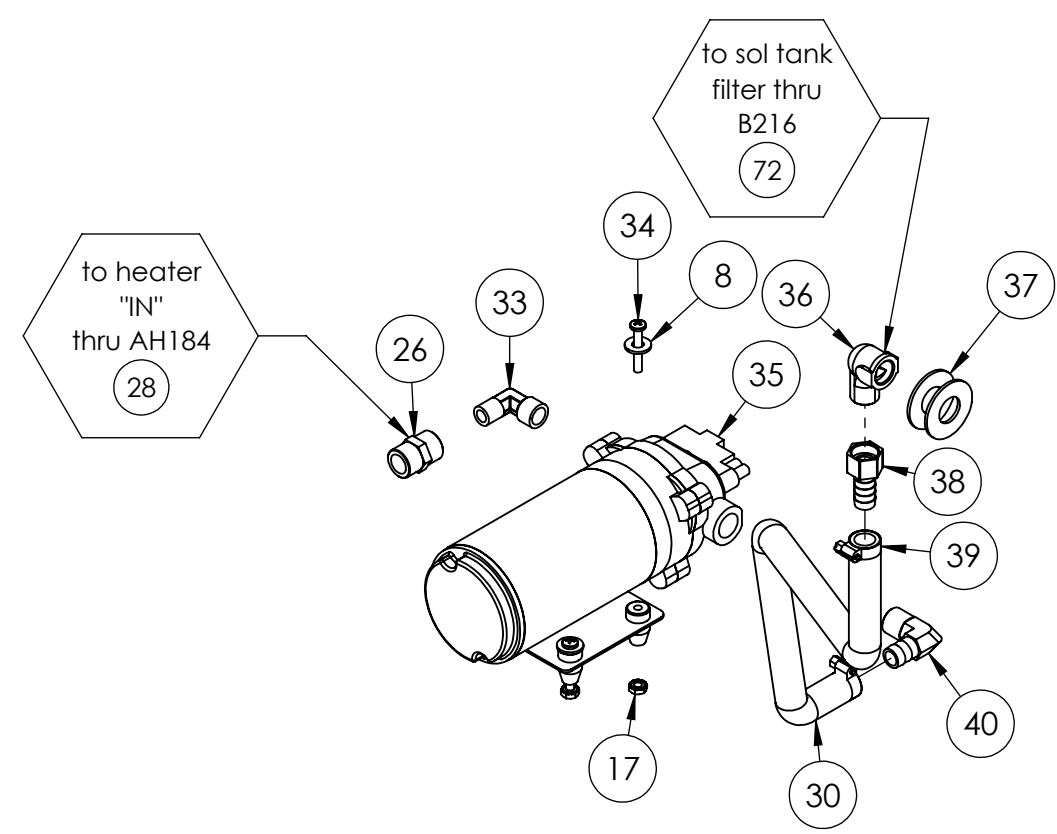
PART NO.	DESCRIPTION	QTY
AK-SPH	Speedster accessory bundle	1
E996	harness, electrical, 1001	1
E351A	powercord, ext 50', 12/3, la066a female twist locks x la0041 male end, sjtw solid jacket	2
P590	cuties, 1/4" qd, standard pack of 2	1



NAME	DATE	MYTEE 858-679-1191
DRAWN M.LaBarbera	10/2013	
CHECKED		TITLE:
COMMENTS:		speedster
<small>PROPRIETARY AND CONFIDENTIAL</small> <small>THE INFORMATION CONTAINED IN THIS DRAWING IS THE SOLE PROPERTY OF MYTEE LLC. ANY REPRODUCTION IN PART OR AS A WHOLE WITHOUT THE WRITTEN PERMISSION OF MYTEE LLC IS PROHIBITED.</small>		SIZE DWG. NO. REV C 1001DX-200-230 22.6
SCALE: 1:48	DO NOT SCALE DRAWING	SHEET 1 OF 6

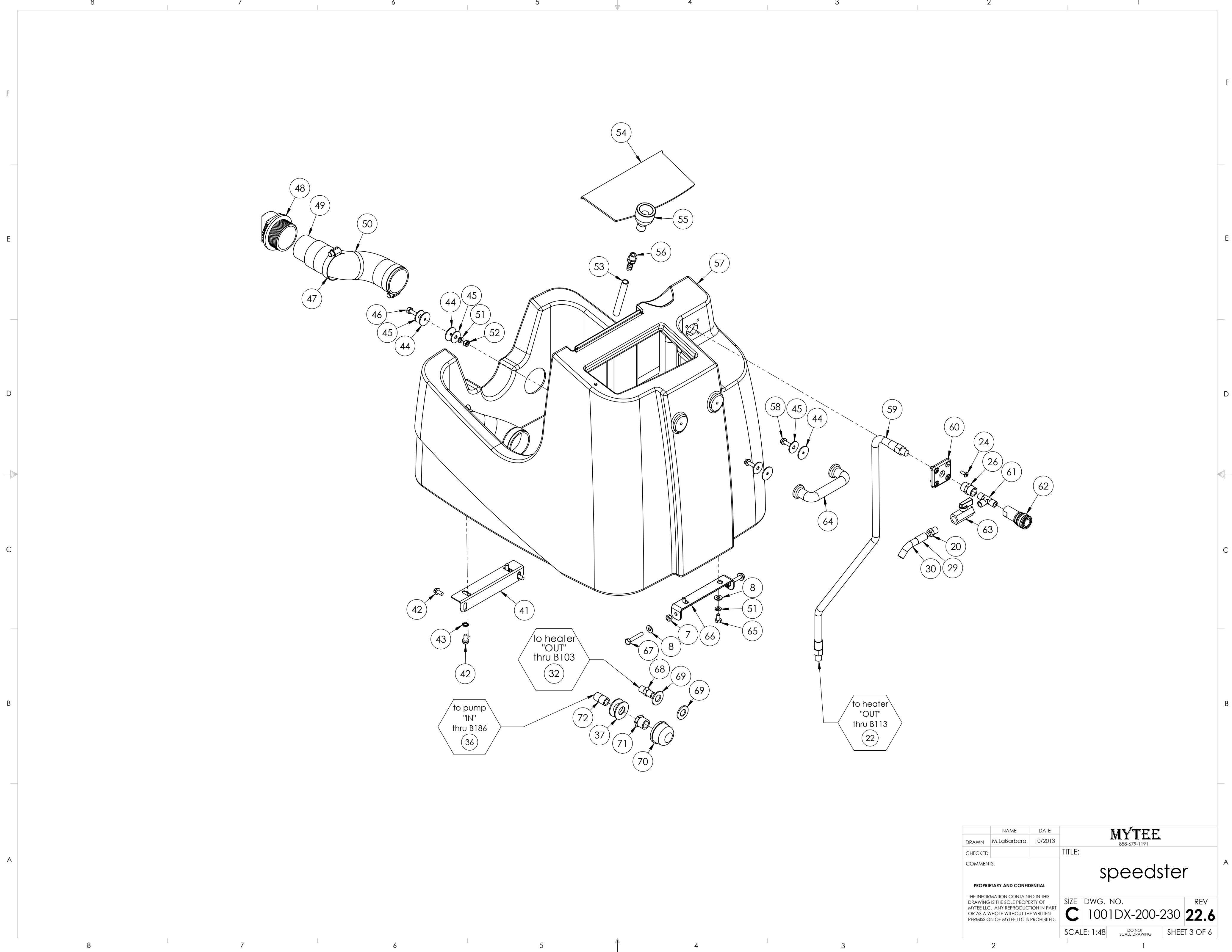
8 7 6 5 4 3 2 1

F
E
D
C
B
A

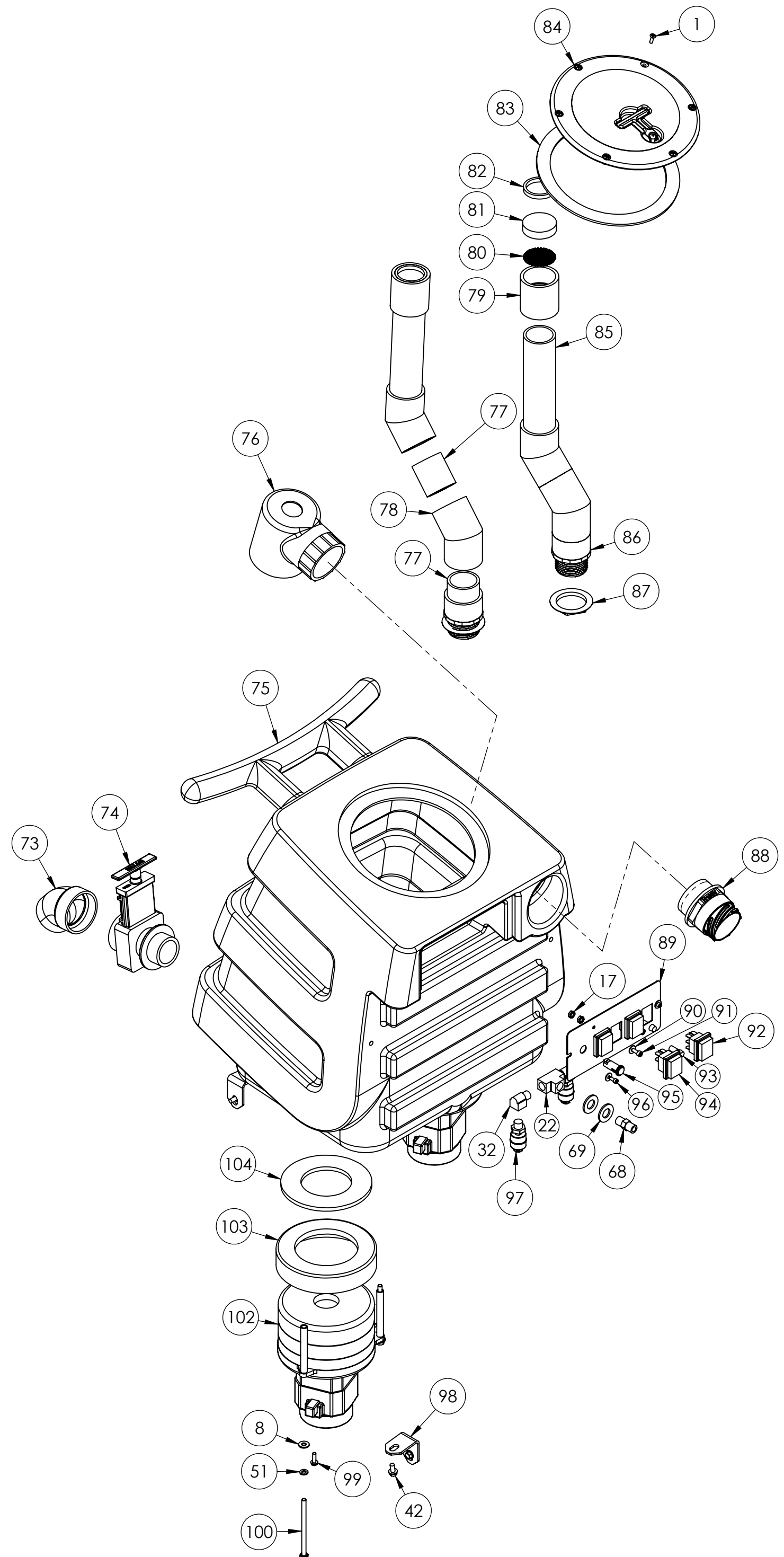


	NAME	DATE	MYTEE 858-679-1191	
DRAWN	M.LaBarbera	10/2013		
CHECKED			TITLE:	
COMMENTS:			speedster	
<small>PROPRIETARY AND CONFIDENTIAL</small> <small>THE INFORMATION CONTAINED IN THIS DRAWING IS THE SOLE PROPERTY OF MYTEE LLC. ANY REPRODUCTION IN PART OR AS A WHOLE WITHOUT THE WRITTEN PERMISSION OF MYTEE LLC IS PROHIBITED.</small>			SIZE	DWG. NO.
			C	1001DX-200-230
			SCALE: 1:48	REV 22.6
			<small>DO NOT SCALE DRAWING</small>	SHEET 2 OF 6

8 7 6 5 4 3 2 1

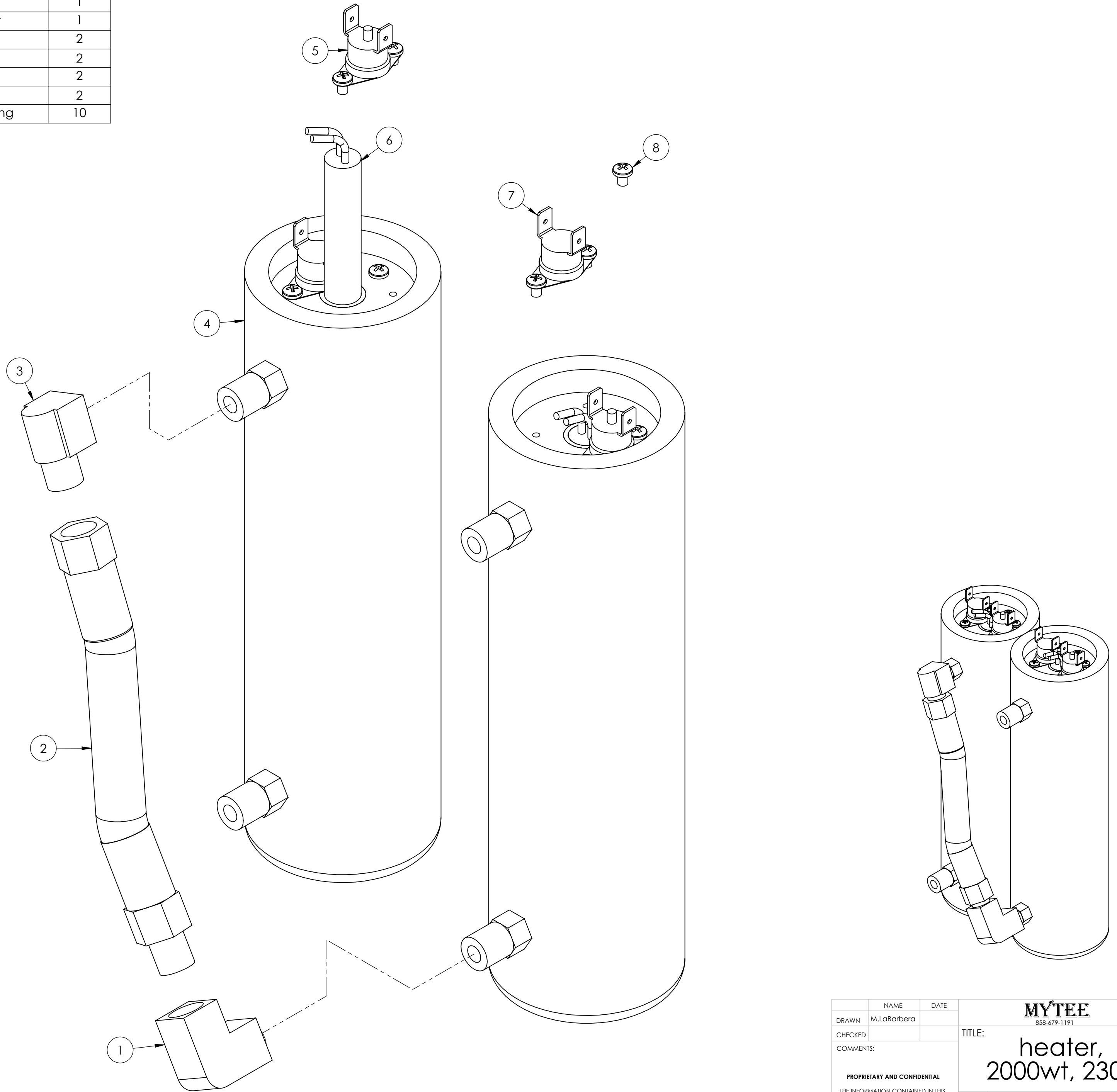


	NAME	DATE	MYTEE 858-679-1191		
DRAWN	M.LaBarbera	10/2013			
CHECKED			TITLE: speedster		
COMMENTS:					
<small>PROPRIETARY AND CONFIDENTIAL</small> <small>THE INFORMATION CONTAINED IN THIS DRAWING IS THE SOLE PROPERTY OF MYTEE LLC. ANY REPRODUCTION IN PART OR AS A WHOLE WITHOUT THE WRITTEN PERMISSION OF MYTEE LLC IS PROHIBITED.</small>			SIZE	DWG. NO.	REV
			C	1001DX-200-230	22.6
SCALE: 1:48			DO NOT SCALE DRAWING	SHEET 3 OF 6	



	NAME	DATE	MYTEE 858-679-1191		
DRAWN	M.LaBarbera	10/2013			
CHECKED			TITLE: speedster		
COMMENTS:					
<small>PROPRIETARY AND CONFIDENTIAL</small> <small>THE INFORMATION CONTAINED IN THIS DRAWING IS THE SOLE PROPERTY OF MYTEE LLC. ANY REPRODUCTION IN PART OR AS A WHOLE WITHOUT THE WRITTEN PERMISSION OF MYTEE LLC IS PROHIBITED.</small>			SIZE	DWG. NO.	REV
			C	1001DX-200-230	22.6
SCALE: 1:48			DO NOT SCALE DRAWING	SHEET 4 OF 6	

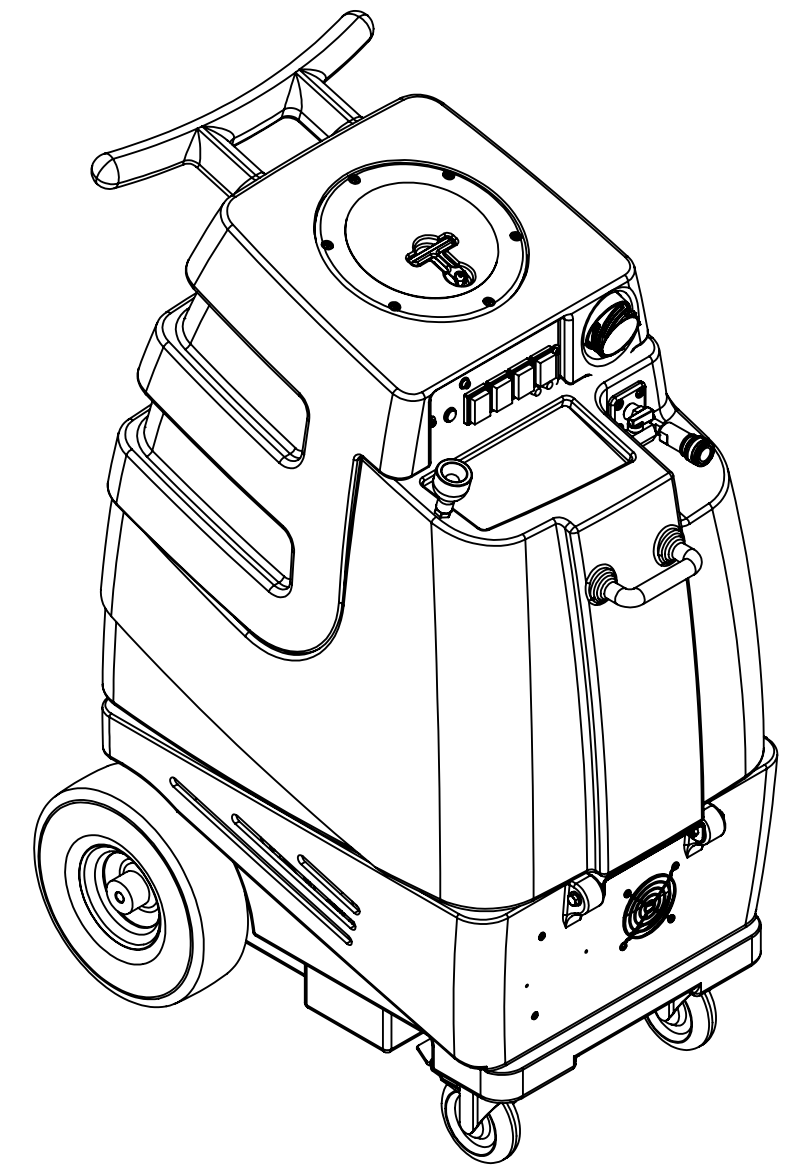
ITEM NO.	PART NO.	DESCRIPTION	QTY.
1	B207	elbow, brass, 90 deg, 1/4" fpt x 1/4" fpt	1
2	AH156	hose, 3/8", (OAL), f x fs, 5400 gray	1
3	B103	elbow, 90 deg street, 1/4"mpt x 1/4" fpt	1
4	H903A	heater, aluminum cast, single	2
5	E574	Thermostat, 310°F ± 10°F, Manual, 1/4"	2
6	E520	heating rod, 1000W, 230V	2
7	E573	Thermostat, 200°, Auto, 1/4"	2
8	H274	screw, 6 x 3/16, phil pan head, self-tapping	10



	NAME	DATE	MYTEE 858-679-1191	
DRAWN	M.LaBarbera			
CHECKED			TITLE: heater, 2000wt, 230v	
COMMENTS:			SIZE DWG. NO.	REV
<small>PROPRIETARY AND CONFIDENTIAL</small> <small>THE INFORMATION CONTAINED IN THIS DRAWING IS THE SOLE PROPERTY OF MYTEE LLC. ANY REPRODUCTION IN PART OR AS A WHOLE WITHOUT THE WRITTEN PERMISSION OF MYTEE LLC IS PROHIBITED.</small>			C 1001DX-200-230	OD
			SCALE: 2:2	DO NOT SCALE DRAWING

REVISIONS

REV.	DESCRIPTION	DATE	APPROVED
OD	ORIGINAL DRAFT	-	JFL
A	REPLACED G003 W G022	8/2013	JFL
B	REPLACED H033 W H342, ADDED H210 & H216	10/8/2013	JFL
C	G021 REPLACED W G097	10/22/2013	JFL
D	REPLACED G022 W G003	7/29/2014	ML
E	REPLACED H219 W H042	8/8/2014	ML
F	ADDED B241	4/16/2015	ML
G	REMOVED ELECTRONIC FLOAT	3/8/2016	ML
22.6	AH206 REPLACES AH120	6/2022	ML



	NAME	DATE	MYTEE 858-679-1191	
DRAWN	M.LaBarbera	10/2013	speedster	
CHECKED				
COMMENTS:			SIZE	DWG. NO.
<p style="font-size: small; margin: 0;">PROPRIETARY AND CONFIDENTIAL</p> <p style="font-size: x-small; margin: 0;">THE INFORMATION CONTAINED IN THIS DRAWING IS THE SOLE PROPERTY OF MYTEE LLC. ANY REPRODUCTION IN PART OR AS A WHOLE WITHOUT THE WRITTEN PERMISSION OF MYTEE LLC IS PROHIBITED.</p>			C	1001DX-200-230
			REV	22.6
			SCALE: 1:48	DO NOT SCALE DRAWING
			SHEET 6 OF 6	